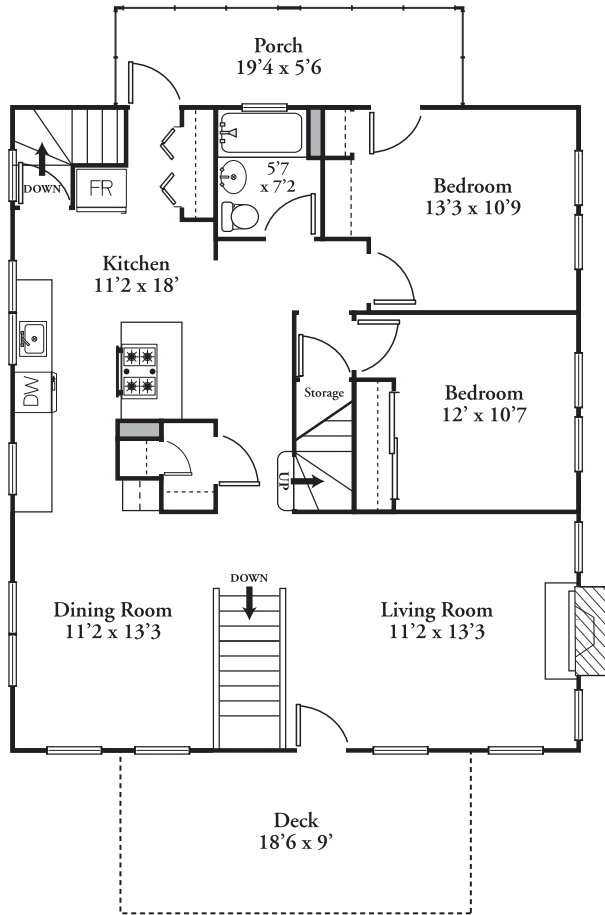
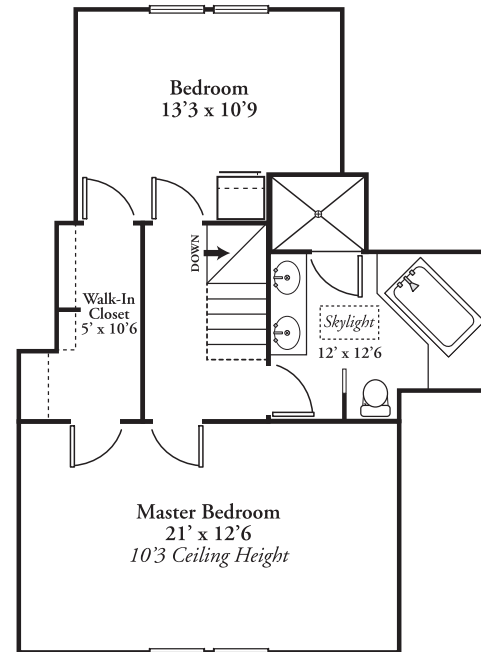


# 9 HOSMER STREET, WATERTOWN

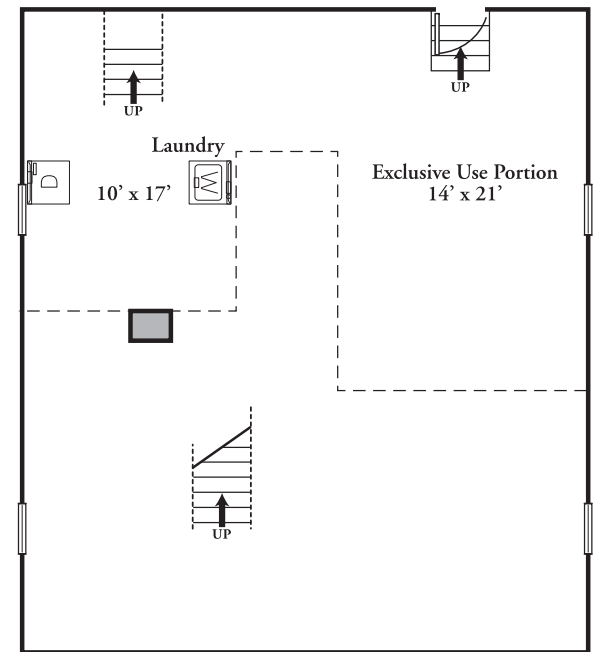
## SECOND FLOOR *8'9" Ceiling Height*



## THIRD FLOOR *7'3" Ceiling Height*



## BASEMENT



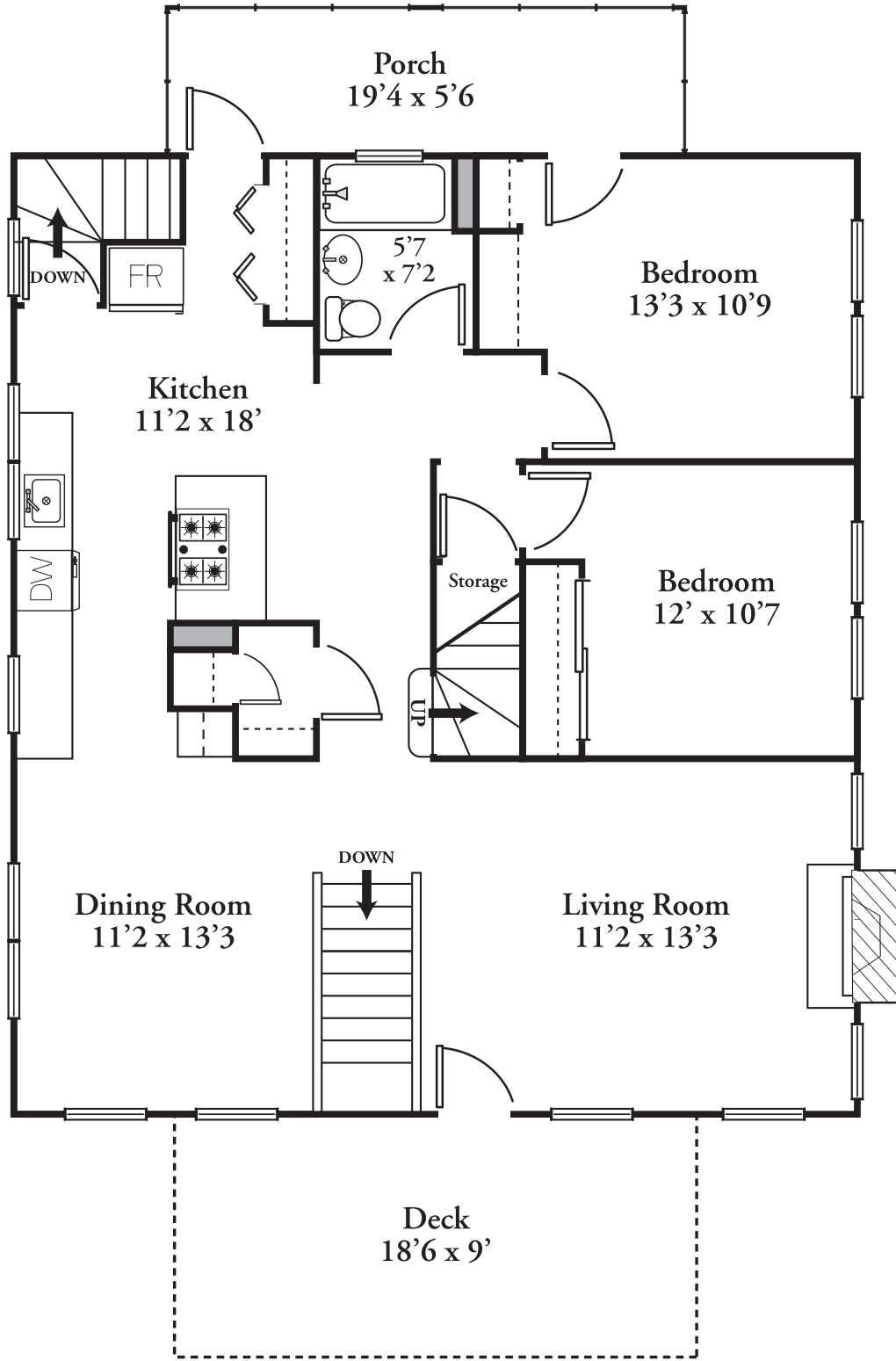
© 2020

David Ward | [www.thecreativeward.com](http://www.thecreativeward.com) | 617-828-3171

*These plans are for marketing purposes only and to provide general information.  
Floor plans and dimensions are approximate.*

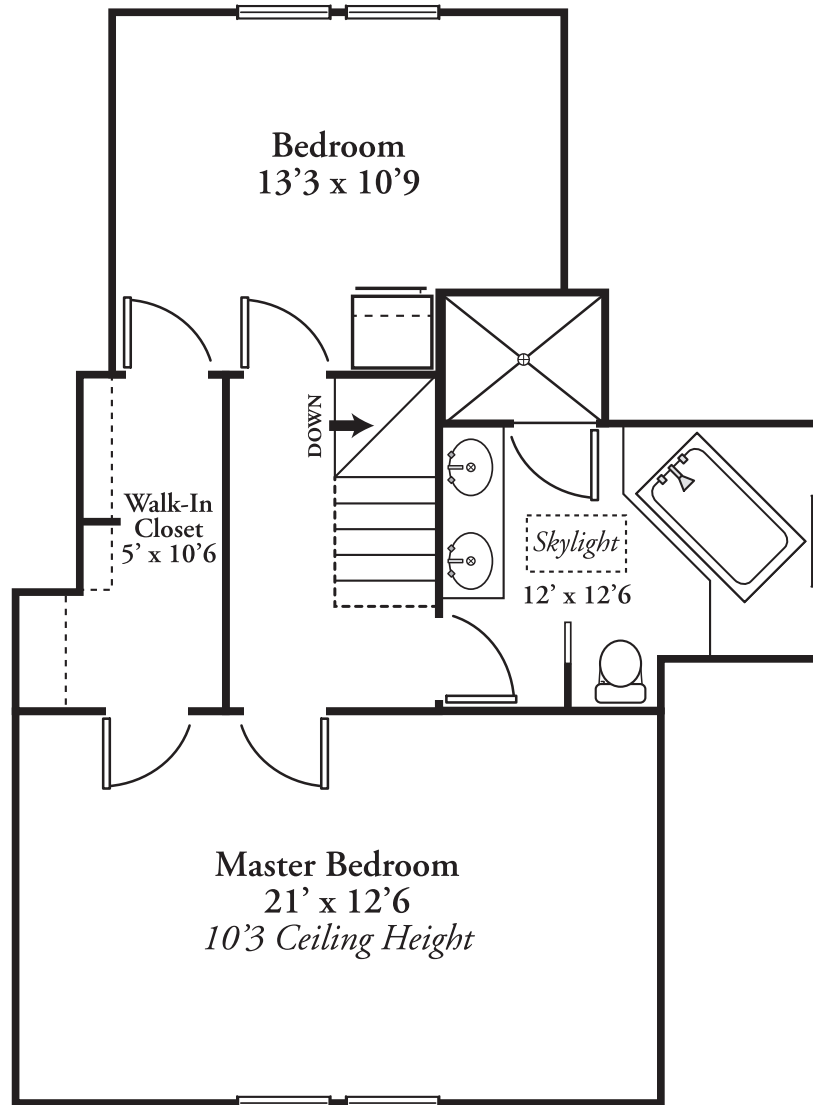
# 9 HOSMER STREET, WATERTOWN

## SECOND FLOOR *8'9" Ceiling Height*



# 9 HOSMER STREET, WATERTOWN

## THIRD FLOOR *7'3" Ceiling Height*



© 2020

David Ward | [www.thecreativeward.com](http://www.thecreativeward.com) | 617-828-3171

*These plans are for marketing purposes only and to provide general information.  
Floor plans and dimensions are approximate.*

# 9 HOSMER STREET, WATERTOWN

## BASEMENT

